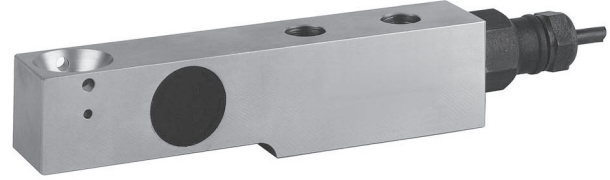


Shear Beam

Type Series FSB32



Features:

- Measuring range from 5 kN to 100 kN
- Stainless steel construction
- Unique blind loading hole
- Inexpensive price
- Lower profile design
- High input resistance
- Protection class IP67

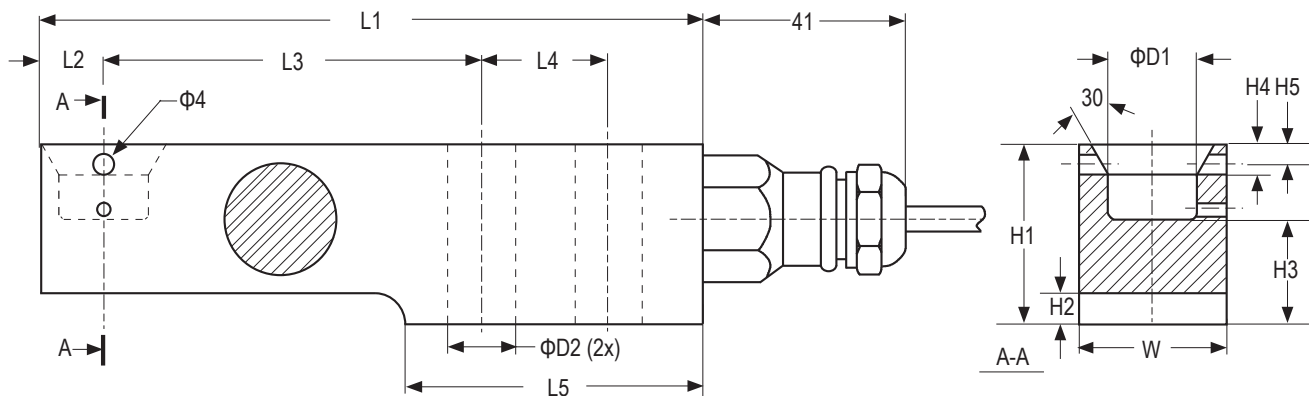
Applications:

- Weight & dosing applications
- Force measurement
- Platform scales
- Production lines
- Measurement and inspection equipment
- Testing and manufacturing plants

Technical data:

Maximum capacity		kN	5 / 10 / 20 / 50 / 100	5 / 10 / 20 / 50
	$1 N = 0.10197 kg$	kg	510 / 1020 / 2039 / 5099 / 10197	510 / 1020 / 2039 / 5099
Temperature effect on minimum dead load output		% FS /10°C	≤ ± 0.0400	≤ ± 0.0127
Temperature effect on sensitivity		% FS /10°C	≤ ± 0.0200	≤ ± 0.0100
Combined error		% FS	≤ ± 0.0500	≤ ± 0.0200
Non-linearity		% FS	≤ ± 0.0400	≤ ± 0.0166
Hysteresis		% FS	≤ ± 0.0400	≤ ± 0.0166
Creep error (30 minutes)		% FS	≤ ± 0.0600	≤ ± 0.0166
Rated output		mV/V		2 ± 0.1%
Zero balance		%		≤ ± 5
Excitation voltage		% FS		5 ... 15
Input resistance		Ω		1100 ± 50
Output resistance		Ω		1000 ± 2
Insulation resistance (100 V DC)		MΩ		≥ 5000
Safe load limit		% FS		200
Ultimate load		% FS		300
Safe side load		% FS		100
Compensated temperature range		°C		-10 ... +40
Operating temperature range		°C		-20 ... +65
Load cell material			stainless steel 17-4 PH	
Sealing			potted	
Protection according EN 60 529			IP67	

Dimensions:



Range	L1	L2	L3	L4	L5	H1	H2	H3	H4	H5	W	D1	D2	Mounting bolts	Torque *
5/10/20 kN	155	15	80	35	76	36	6	21	7	4	30	18	13	M12 8.8	90 Nm
50 kN	190	21	105	40	93	49	8	28.5	6	8	43	25	21	M20 8.8	400 Nm
100 kN	245	20	135	50	120	73	12.5	42	10	n.a.	60	30	27	M24 8.8	700 Nm

* Torque values assume oiled threads.

Electrical connections:

